



WARRANTY INFORMATION

We sincerely thank you for your purchase and wish you years of pleasure using it!

Tele Vue Warranty Summary

Eyepieces, Barlows, Powermates, & Paracorr have a “Lifetime Limited” warranty, telescopes & accessories are warranted for 5 years. Electronic parts are warranted for 1 year. Warranty is against defects in material or workmanship. No other warranty is expressed or implied. No returns without prior authorization. Please keep your receipts in case you need warranty service.

Lifetime Limited Warranty details online: <http://bit.ly/TVOPTLIFE>

5-Year/1-Year Warranty details online: <http://bit.ly/TVOPTLIMITED>

Keep For Your Records

Dealer: _____ City/State/Country: _____

Date (day/month/year): ____ / ____ / ____ Item Code / Description _____

32 Elkay Dr., Chester, New York 10918 (845) 469-4551. televue.com



@televueoptics

(BVP-2001)

BINO VUE™ 2x AMPLIFIER INSTRUCTIONS

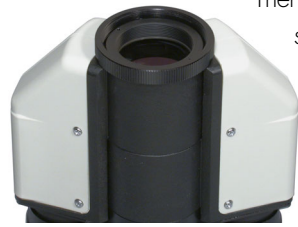
Parts List:

- Bino Vue 2x Amplifier BVP-2001
- 2x Amplifier
- Flat Coupler

Installation

To install your new Bino Vue 2x Amplifier with filter threads you must first unscrew the Extension Coupler from the Bino Vue body. Next, thread the Flat Coupler onto the 2x Amplifier with the spanner slots facing out.

Then thread the assembly into the Bino Vue Body in place of the Extension Coupler. That's it!



Bino Vue with Extension Coupler removed

Please note that the Flat Coupler provides

enough space for the inclusion of an 1 1/4" filter without hitting the diagonal mirror when using 2" Tele Vue diagonals and the 2"-1 1/4" Tele Vue "High-Hat" adapter. However, in this configuration the amplifier is no longer quite parfocal. A moderate focuser in-travel is required.



Bino Vue with Flat Coupler and 2x Amplifier with filter threads installed

If your telescope requires the Bino Vue to be parfocal because it cannot reach focus in the standard configuration then:

- 1) unscrew the 2x Amplifier from the Flat Coupler,
- 2) Thread the Extension Coupler to the Bino Vue body
- 3) Thread the 2x Amplifier into the Extension Coupler.

It is still safe to insert the Bino Vue into 2" Tele Vue diagonals with the 2"-1 1/4" TeleVue "High-Hat" adapter without hitting the diagonal mirror. If a filter is threaded onto the Bino Vue in this configuration, it **WILL** hit the mirror. Take precautions to ensure this does not happen.



Bino Vue set up with Extension Coupler and 2x Amplifier for parfocalization. Do Not Use Filters.



32 Elkay Drive, Chester, New York 10918 845.469.4551 www.televue.com

(BVP-2001)

BINO VUE™ 2x AMPLIFIER INSTRUCTIONS

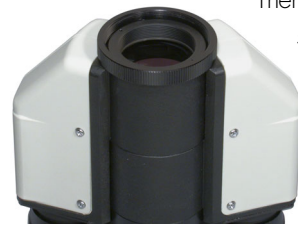
Parts List:

- Bino Vue 2x Amplifier BVP-2001
- 2x Amplifier
- Flat Coupler

Installation

To install your new Bino Vue 2x Amplifier with filter threads you must first unscrew the Extension Coupler from the Bino Vue body. Next, thread the Flat Coupler onto the 2x Amplifier with the spanner slots facing out.

Then thread the assembly into the Bino Vue Body in place of the Extension Coupler. That's it!



Bino Vue with Extension Coupler removed

Please note that the Flat Coupler provides

enough space for the inclusion of an 1 1/4" filter without hitting the diagonal mirror when using 2" Tele Vue diagonals and the 2"-1 1/4" Tele Vue "High-Hat" adapter. However, in this configuration the amplifier is no longer quite parfocal. A moderate focuser in-travel is required.



Bino Vue with Flat Coupler and 2x Amplifier with filter threads installed

If your telescope requires the Bino Vue to be parfocal because it cannot reach focus in the standard configuration then:

- 1) unscrew the 2x Amplifier from the Flat Coupler,
- 2) Thread the Extension Coupler to the Bino Vue body
- 3) Thread the 2x Amplifier into the Extension Coupler.

It is still safe to insert the Bino Vue into 2" Tele Vue diagonals with the 2"-1 1/4" TeleVue "High-Hat" adapter without hitting the diagonal mirror. If a filter is threaded onto the Bino Vue in this configuration, it **WILL** hit the mirror. Take precautions to ensure this does not happen.



Bino Vue set up with Extension Coupler and 2x Amplifier for parfocalization. Do Not Use Filters.



32 Elkay Drive, Chester, New York 10918 845.469.4551 www.televue.com